

## Excellence. Evolved.

This is not just another speaker range. Each new generation of 800 Series Diamond is a landmark event for Bowers & Wilkins. This is our benchmark, our icon; the most advanced range of loudspeakers we know how to make. For us, the 800 Series Diamond is everything we know, and everything we are.

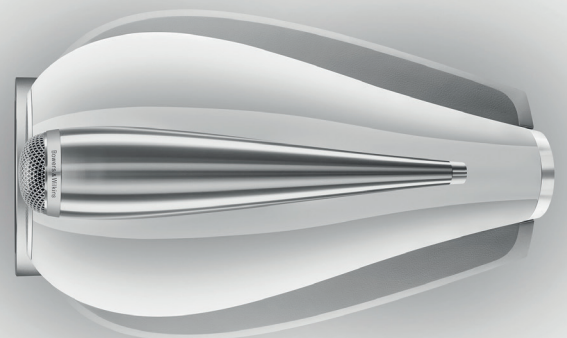
### 802 D4

The 802 D4 offers much of the performance of 801 D4, including the same Turbine Head enclosure for its midrange cone, yet is more affordable overall. Perfect for reference-grade stereo listening and also an excellent choice in home theatre applications.



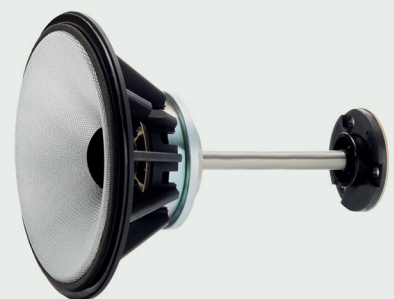
### Decoupled midrange

The dedicated midrange cone uses four proprietary Bowers & Wilkins technologies: the Continuum cone, FST™, Biomimetic Suspension and midrange decoupling, the latter ensuring minimal interference from the loudspeaker's bass drivers.

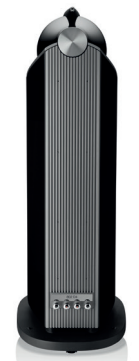


### Aluminium top-plate

Every stereo model in the new range has a significantly upgraded cabinet design with an all-new aluminium top-plate for even greater stiffness and as a result, even more realism. The same design provides a perfect mounting point for all-new Leather by Connolly cabinet detailing.



# 802D4



## 說明

三音路氣孔式音箱系統

## 技術特色

鑽石高音  
高音單體置頂設計  
Continuum™ FST中音音盆  
反諧振栓塞  
仿生音圈懸掛系統  
Turbine™中音殼  
Matrix™矩陣結構優化  
Aerofoil™翼形低音音盆  
Flowport氣流導孔

## 驅動單體

高音: 1x ø25mm (1英吋) 鑽石高音  
中音: 1x ø150mm (6英吋) Continuum™ FST音盆  
低音: 2x ø200mm (8英吋) Aerofoil™翼形音盆

## 頻率範圍

14Hz to 35kHz

## 頻率響應

17Hz to 28kHz (+/-3dB)

## 靈敏度

90dB (2.83V, 1m)

## 諧波失真

第二及第三諧波(90dB, 1m)  
<1% 70Hz – 20kHz  
<0.3% 100Hz – 20kHz

## 額定阻抗

8Ω (minimum 3.0Ω)

## 建議擴大功率

50W – 500W into 8Ω不失真

## 建議最大接線阻抗

0.1Ω

## 尺寸

高: 1218mm  
寬: 413mm  
深: 602mm

## 淨重

88.10kg

## 顏色

Gloss Black(黑色網罩)  
White (灰色網罩)  
Satin Rosenut(黑色網罩)  
Satin Walnut (灰色網罩)

