

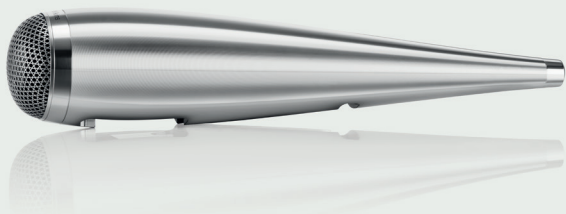
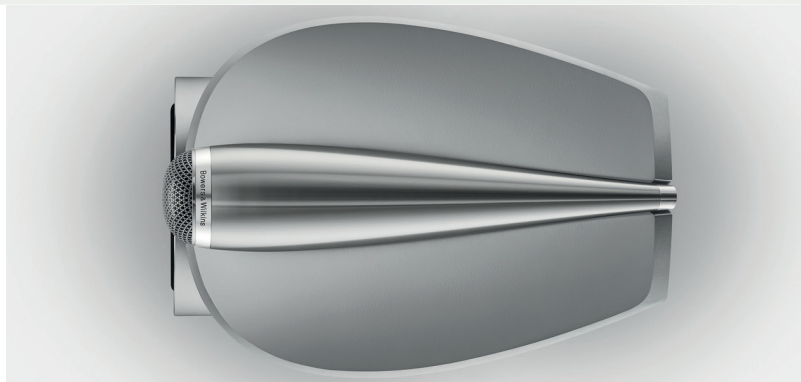


Excellence. Evolved.

This is not just another speaker range. Each new generation of 800 Series Diamond is a landmark event for Bowers & Wilkins. This is our benchmark, our icon; the most advanced range of loudspeakers we know how to make. For us, the 800 Series Diamond is everything we know, and everything we are.

805 D4

The 805 D4 standmount loudspeaker is the most compact model in the 800 Series Diamond range, but it's still packed with advanced technologies, including that all-important Diamond dome tweeter and Solid Body Tweeter-on-Top. It's proof positive that small can still be beautiful.

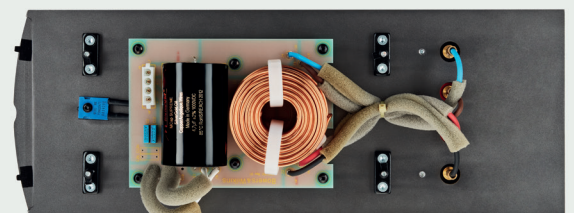


Solid Body Tweeter

Our iconic Solid Body Tweeter-on-Top housing features an elongated form with a longer tube-loading system, creating an even more free and open sound with high frequencies. As before, the carefully decoupled housing is milled from a single solid block of aluminium to better resist resonance.

Rear-mounted crossover

All stereo models in the new range now use rear-mounted crossover designs mounted on stiff aluminium spines. This isolates the sensitive capacitors from the effects of air pressure within the enclosure.





805D4

說明	二音路氣孔式音箱系統
技術特色	鑽石高音 高音單體置頂設計 Continuum™ FST中音音盆 反諧振栓塞 Matrix™矩陣結構優化 Flowport氣流導孔
驅動單體	高音: 1x ø25mm (1英吋) 鑽石高音 中低音: 1x ø165mm (6.5英吋) Continuum™ FST音盆
頻率範圍	34Hz to 35kHz
頻率響應	42Hz to 28kHz (+/-3dB)
靈敏度	88dB (2.83V,1m)
諧波失真	第二及第三諧波(90dB,1m) <1% 90Hz – 20kHz <0.3% 120Hz – 20kHz
額定阻抗	8Ω (minimum 4.6Ω)
建議擴大功率	50W – 120W into 8Ω不失真
建議最大接線阻抗	0.1Ω
尺寸	高:440mm 寬:240mm 深:373mm
淨重	15.55kg
顏色	Gloss Black(黑色網罩) White (灰色網罩)

