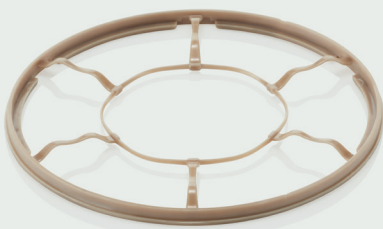


Excellence. Evolved.

This is not just another speaker range. Each new generation of 800 Series Diamond is a landmark event for Bowers & Wilkins. This is our benchmark, our icon; the most advanced range of loudspeakers we know how to make. For us, the 800 Series Diamond is everything we know, and everything we are.

803 D4

Our most compact headed model brings all of the technical advantages of a dedicated midrange enclosure to a smaller footprint that's easily accommodated in any home. Small doesn't mean compromised, either: 803 D4 still bristles with technical innovation throughout.

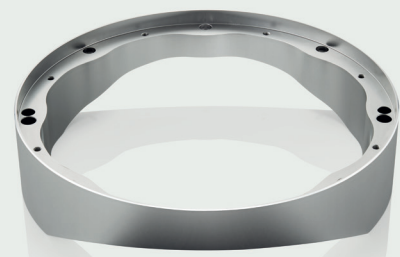


Biomimetic Suspension

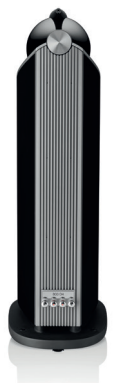
Our all-new Biomimetic Suspension revolutionises midrange cone performance by greatly reducing the unwanted air pressure and coloration that a conventional fabric spider can generate. The result? Midrange transparency you wouldn't believe possible.

Aluminium bass pods

803 D4 mounts two Aerofoil bass cones in aluminium bass pods, each of which is clamped into an internal aluminium plate fixed to the stiffest part of its cabinet. Formed as single pieces of metal, these structures provide the perfect location for clean, accurate bass.



803D4



說明

三音路氣孔式音箱系統

技術特色

鑽石高音
高音單體置頂設計
Continuum™ FST中音音盆
反諧振栓塞
仿生音圈懸掛系統
Turbine™中音殼
Matrix™矩陣結構優化
Aerofoil™翼形低音音盆
Flowport氣流導孔

驅動單體

高音: 1x ø25mm (1英吋) 鑽石高音
中音: 1x ø150mm (6英吋) Continuum™ FST音盆
低音: 2x ø180mm (7英吋) Aerofoil™翼形音盆

頻率範圍

16Hz to 35kHz

頻率響應

19Hz to 28kHz (+/-3dB)

靈敏度

90dB (2.83V, 1m)

諧波失真

第二及第三諧波(90dB, 1m)
<1% 80Hz – 20kHz
<0.3% 100Hz – 20kHz

額定阻抗

8Ω (minimum 3.0Ω)

建議擴大功率

50W – 500W into 8Ω不失真

建議最大接線阻抗

0.1Ω

尺寸

高: 1165mm
寬: 357mm
深: 511mm

淨重

62.15kg

顏色

Gloss Black(黑色網罩)
White (灰色網罩)
Satin Rosenut(黑色網罩)
Satin Walnut (灰色網罩)

